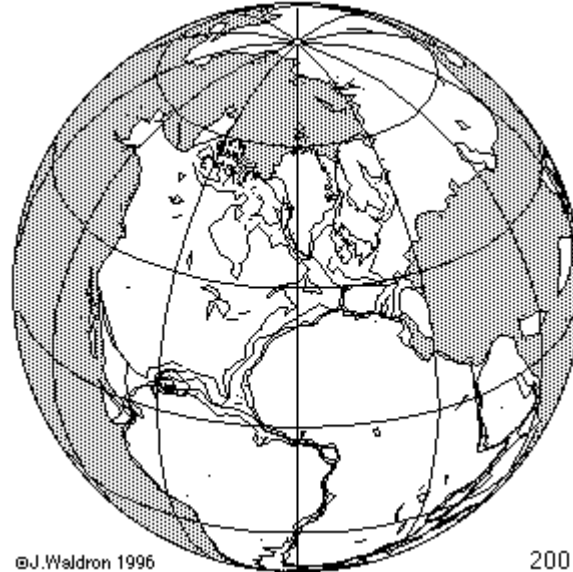




100 Illustrated Ways to Pass the Earth Science Regents with Sample Questions and Games

***This is a copy of the online review sheet located at: (www.ReviewEarthScience.com/100ways). Many of the images located in the online version are animations or pictures which show movement. In order to get the most out of this review sheet, the online site should be visited! This sheet does not do the online version justice! Additionally, the online version has practice regents questions and online games! ***

91 Plate tectonics states the earth's crust is broken into plates which can move.



©J.Waldron 1996

200

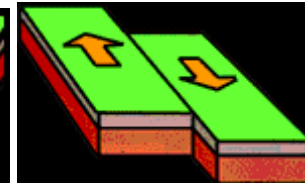
92 Three main types of plate boundaries: convergent, divergent and transform.



Divergent Boundary

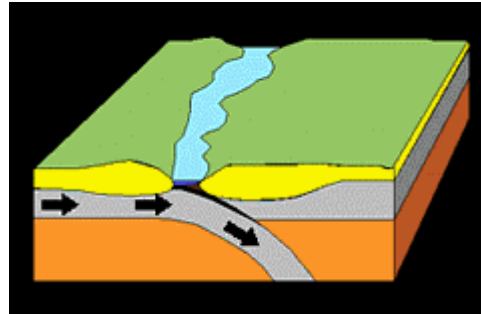


Convergent Boundary

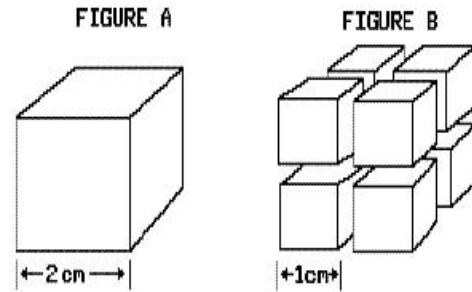


Transform Boundary

93 Mountains form by uplift.

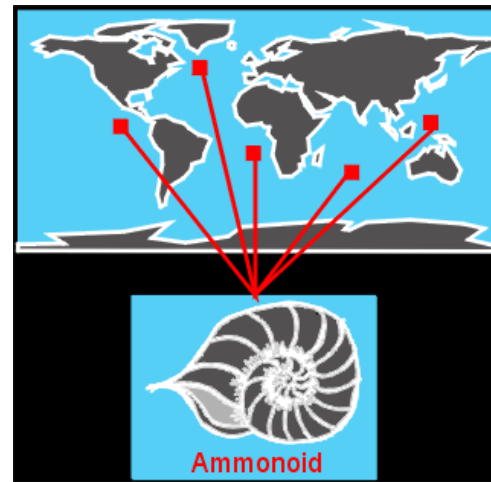


94 The half-life of a radioactive element can't be changed.



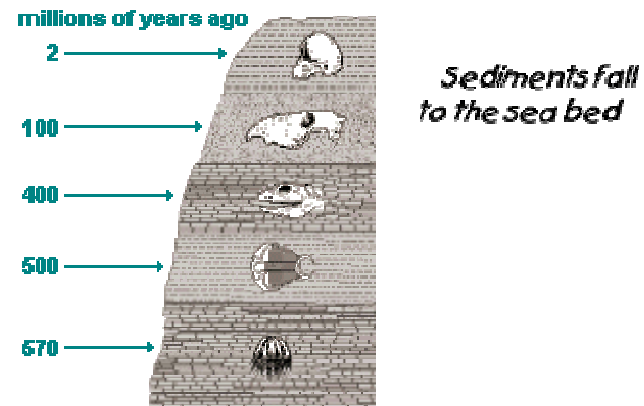
The diagram above represents a cube of radioactive material (Figure A) cut into eight identical cubes (Figure B). Half-life of both samples are the same since you cannot change an element's half-life.

95 Index fossils are good time markers (widely spread, lived a short time).



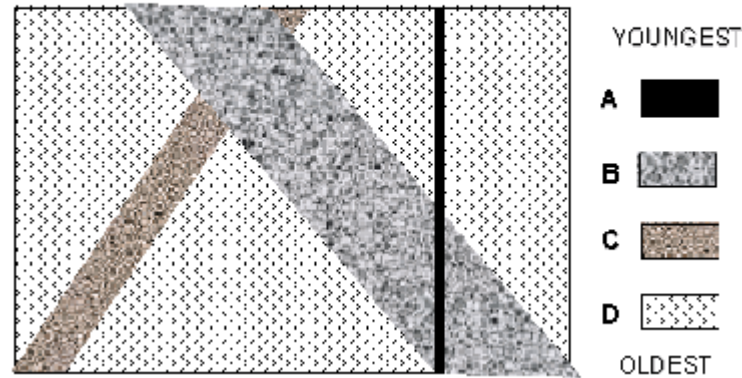
Notice that this type of fossil is found over a wide area and (not shown) was short lived

96 Undisturbed strata - bottom layer is oldest.



97 Intrusion and faults are younger than the rock they are in.

Principles of cross-cutting relationships

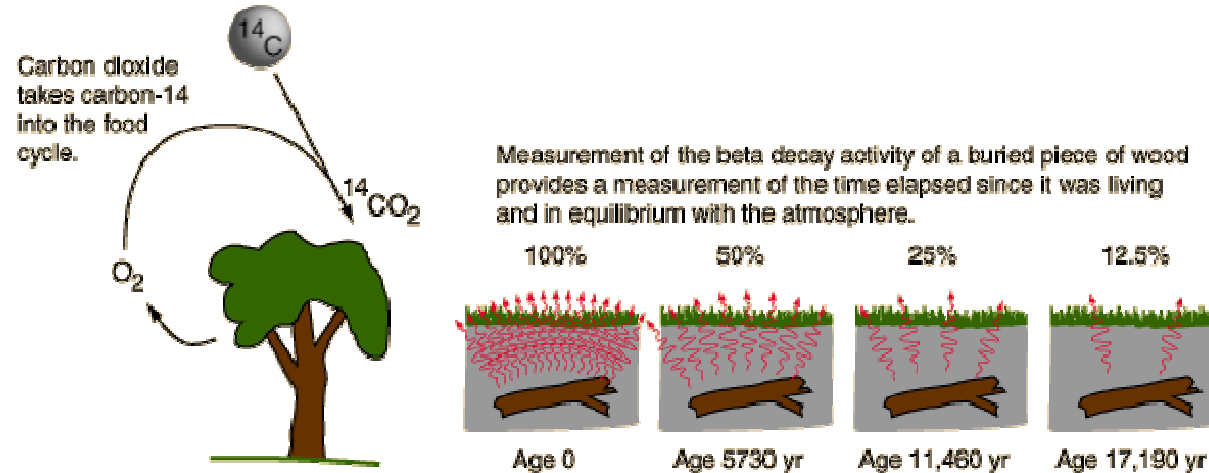


98 Uranium 238 (U 238) dates old rocks.



Half life for U 238 is 4.5×10^9 years

99 Carbon 14 dates recent living objects.



100 Use your Earth Science Reference Tables! This is one of the most important tools in your test taking arsenal.

The University of the State of New York • THE STATE EDUCATION DEPARTMENT • Albany, New York 12234 • www.nysed.gov

Earth Science Reference Tables

© 2005-2008 Review Earth Science™ | All material published to this site is copyrighted to their respective owner(s).

All materials are to be loaded only from this site and cannot be uploaded and displayed on any other site, including not for profit and/or educational sites.